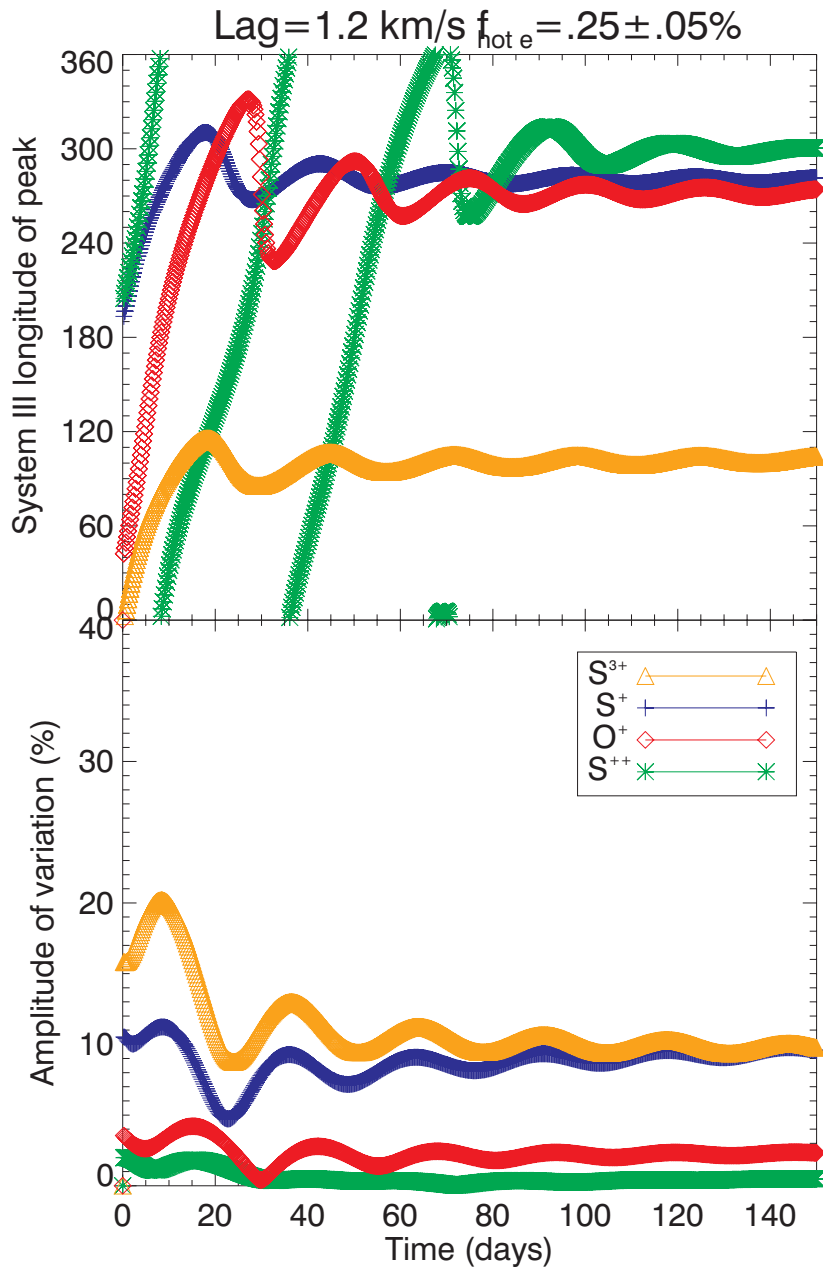


Model Output for 3 sets of conditions



Varying lag and hot electron fraction:

Phase of initial variation increases roughly linearly with time for ~ 70 days before oscillating about a fixed longitude. Amplitude is modulated with 29-day period.

Varying lag, uniform hot electron fraction

After 30 days phase becomes oscillatory. Amplitude is modulated with 29-day period.

Uniform lag, varying hot electron fraction

Phase rapidly becomes fixed in longitude. Amplitude variations dissipate rapidly.

Non-uniform corotational lag seems necessary, but not sufficient to match observations. A longitudinally varying hot electron fraction out of phase with the lag variation produces the best results.